



Risk Matrix Standard Edition

In our competitive market environment of heightened risks, regulatory pressures and shareholder expectations, staying competitive requires companies to be managed effectively and efficiently. By having controls in place to enable all changes in the companies environment (people, processes, premises and suppliers/clients) to be reacted upon promptly, and with actions that will create a positive and timely outcome.

Sound Risk Management practice enables organisations to control risk, measure performance more efficiently, calculate business investments, satisfy regulatory expectations and realize a variety of other business advantages, such as Business Continuity, greater understanding of process flow and others.

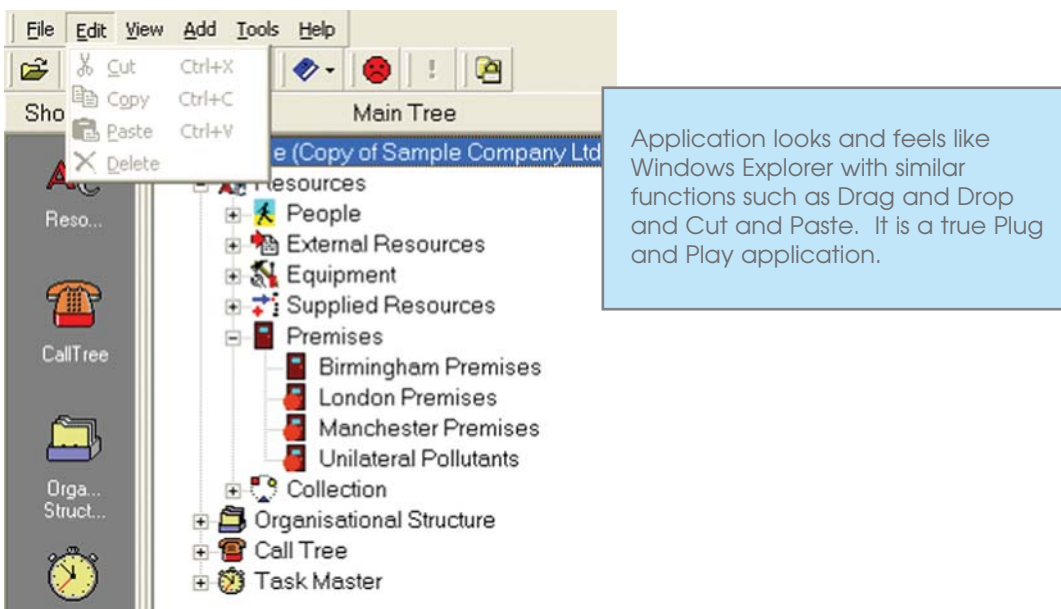
**All this is available through Ark Firsts' Risk Matrix Standard Edition.
The Risk Management and Business Continuity Application**

Risk Matrix Standard Edition will provide:

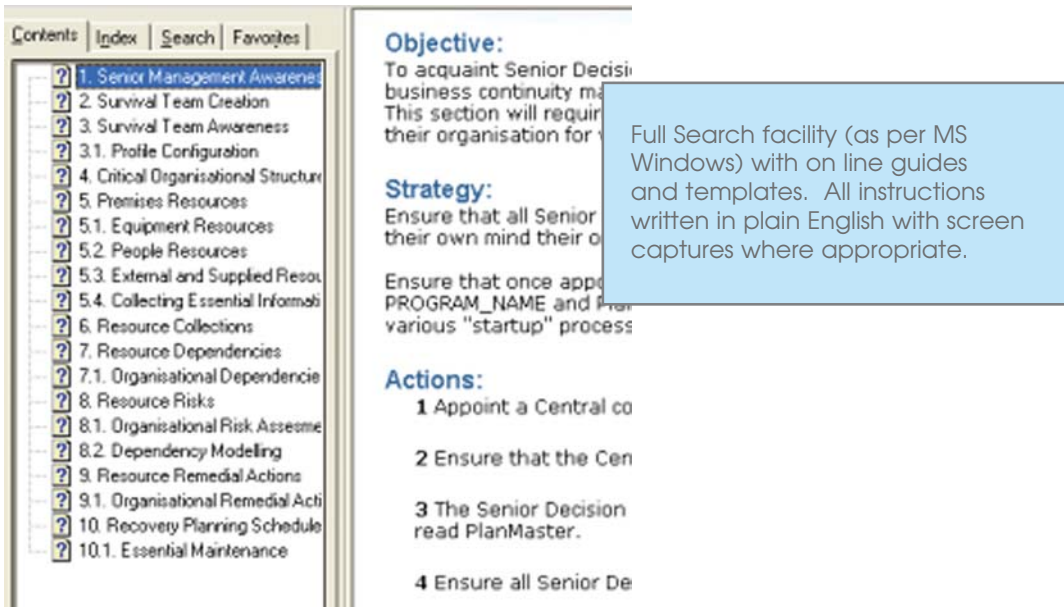
- Clear concise methodology for the complete process through its unique 'Quick Start' process.
- All the training guides and documentation to complete each task.
- Technical Helpdesk facility if required (subject to payment of the maintenance and support contract)
- Explanation as to what Risk Management is about and how to deploy in the business.
- Process can be completed at a pace dictated by the business and not by the application.
- A complete framework for all activities and actions

Risk Matrix Standard Edition will Deliver:

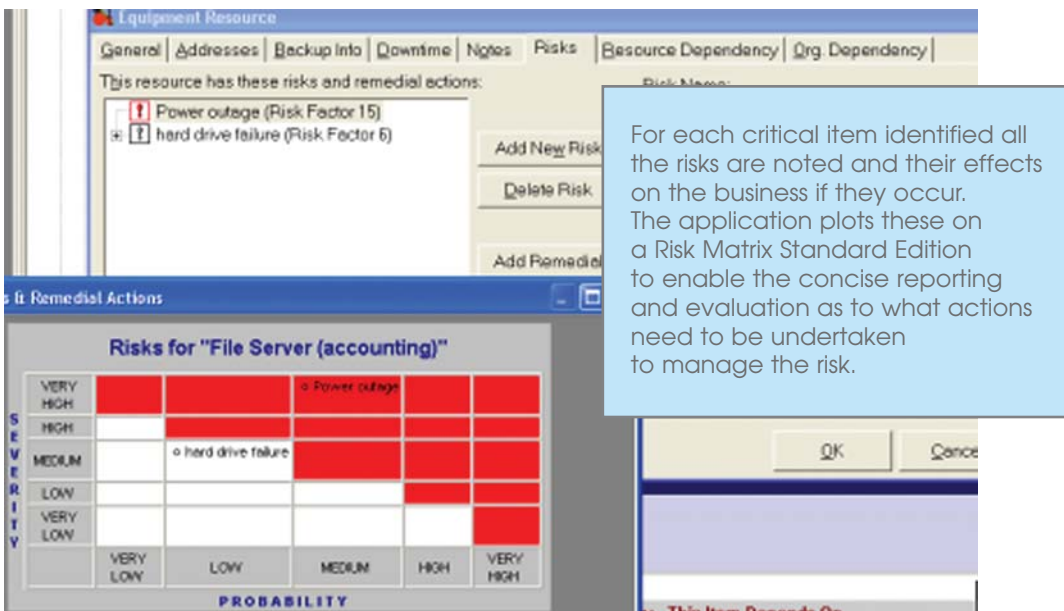
The application is very intuitive through the use of familiar Windows technology. This results in a reduced training requirement which in turn leads to a faster return on investment.



On going Guidance and Help with comprehensive User Guides

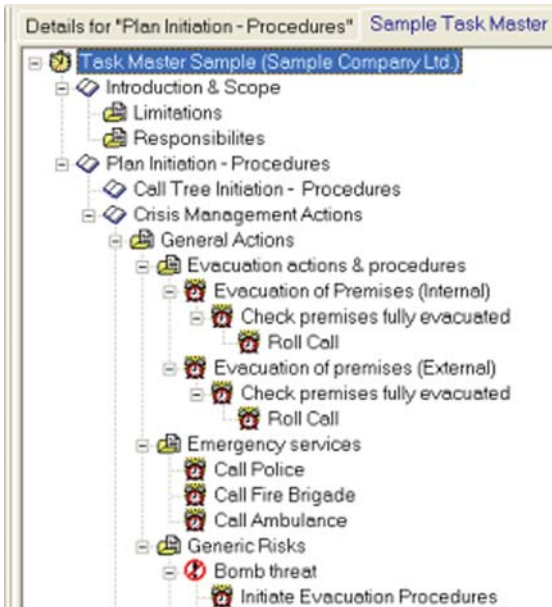


A Risk Analysis process to cover all aspects of the business, from buildings, IT and people, right through to processes.



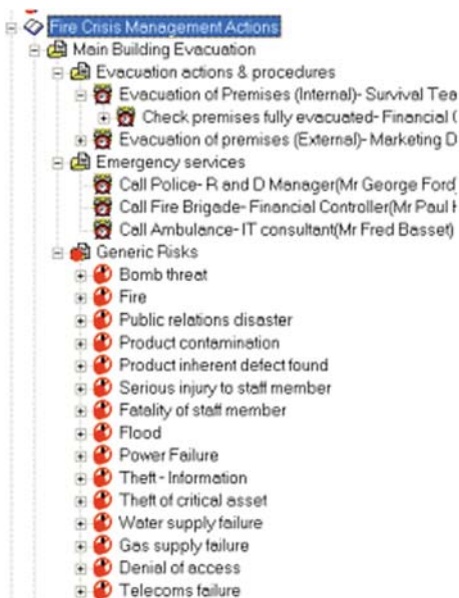
Full Planning facility enable plans to be created on screen covering all aspects of the business together with a desk top test facility.

Application provides 'example events' to assist in the formation of the various plans. From the Sample Task Master area you can 'drag and drop' the various template sheets you need into the Plan Creation Function and then complete the specific details.



Any item/s can be dragged from the Sample Task Master area into the Plan creation function.

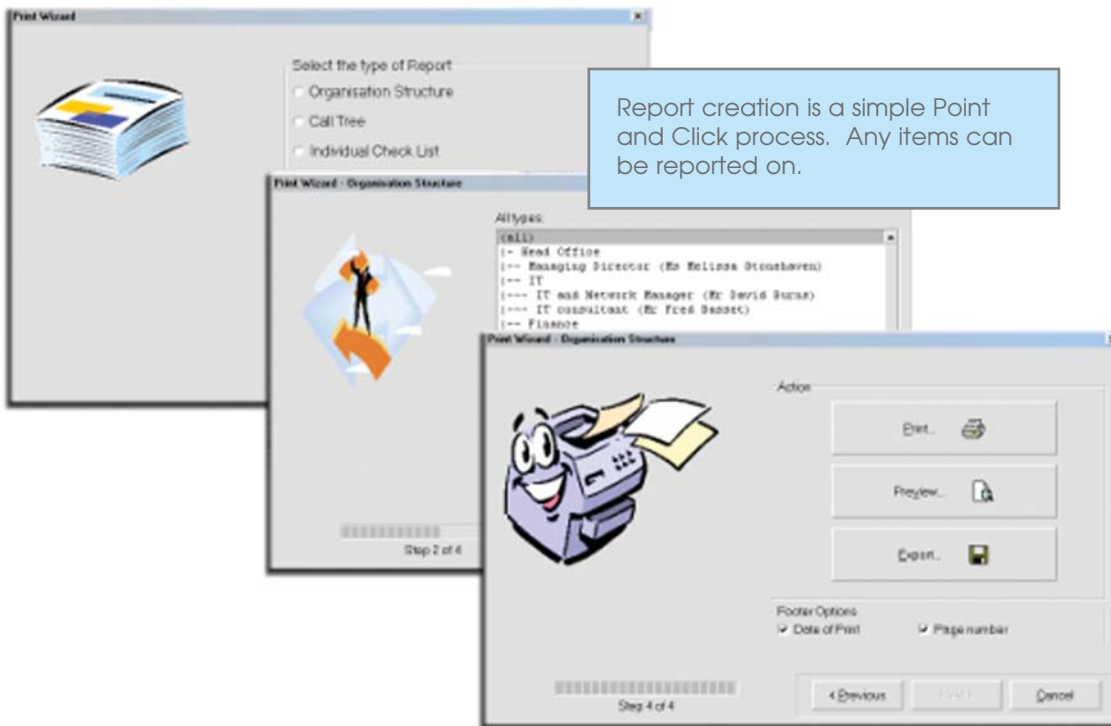
Plans are displayed in Risk Matrix Standard Edition as a tree. These can be restructured, paste, cut and copied allowing great flexibility in their development and creation.



Items from the Sample Task Master area are dropped into the Plan creation tree. These can be easily rearranged by moving in the tree. All relevant details against each action/task are either keyed in or imported from say a Word document.

Once a Plan has been created the Report Wizard enables any aspect or all of the plans to be printed if required.

Ark First's Business Continuity Management solutions 'Risk Matrix Standard Edition' and 'RiskMatrix' are, at every stage, designed to help the user complete and maintain the Business Continuity Management process in the clearest, most efficient manner possible. They cover the following areas and more:



In summary, Risk Matrix Standard Edition provides an:

- Automated Business Continuity Plan production and maintenance, that is flexible, durable and will develop with the business
- **User-friendly intuitive software, which is easy to use, quick to learn**
- Design is based on Windows™ technology, familiar look and feel, compatible with industry standards, no unique skills or hardware needed
- **Powerful SQL database management tools, no need for technical expertise, scalable with multiple access**
- Unique Risk Management methodology and mapping providing clear risk dependency diagrams, superb platform for testing, business planning and ongoing analysis
- **Dynamic Report functionality across every item**
- Extensive help facility for users in simple step-by-step explanations, across all areas.

What other benefits apart from Business Continuity will Risk Matrix Standard Edition provide to my business?

1. Process Mapping for any element of the business
2. Risk analysis for any part of the business or operation
3. Business Planning, enabling the modelling and analysis of the business with new structures, formats and layouts.
4. Asset register.
5. Schematic of business activities with full dependencies.
6. Business Interruption, calculation of potential losses.
7. Risk Calculations.
8. Risk validation tool to assist with negotiations with Broker/Insurer illustrating values and degree of risks that need cover.
9. Automated diary test process for all critical elements of the business that have a backup and need testing regularly.
10. Centralised and secure repository for all critical documents that are held electronically.
11. Efficiency planning.

Minimum Technical Requirements

Ark First recommends that Risk Matrix Standard Edition be run over Windows 2000 or better how ever Risk Matrix Standard Edition may be run over Windows 95, Windows 98, Windows ME, Windows NT, and Windows XP. The minimum specification for using Risk Matrix Standard Edition is 64 MB of memory, 154 MB of free hard disk space and a Processor running at above 133 MHz.

Next steps:

For further information please contact Mr. Don Phillips on 0161 4866219 or alternatively please email us at Sales@ArkFirst.com